

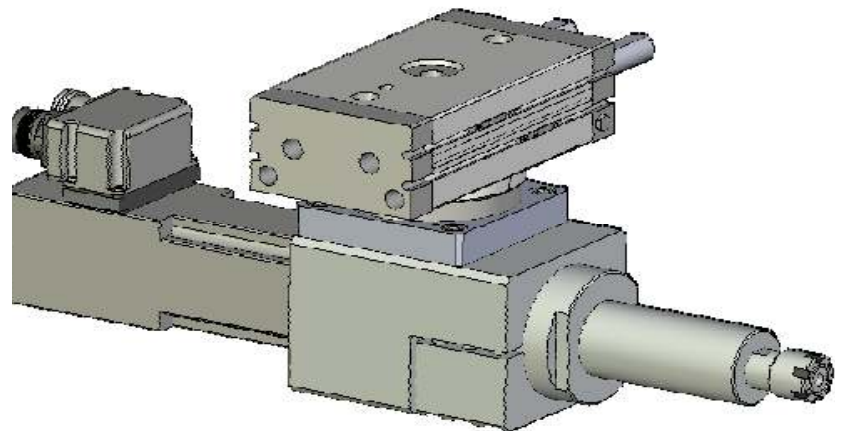


**ACT Robots, Inc.**

Integrated Robotic Solutions



## ***SPOOAC-SR12000*** ***SERVO AUTO COLLET TOOL***



**SPOOAC-SR12000** - closed loop servo driven pneumatically activated collet tool allows for automatic media change. The tool can be equipped with 1/8" or 1/4" collet and combined with media staging nests has the capability to automatically change worn wheels, brushes, deburring bits and other finishing media.

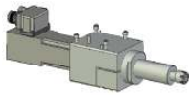
### **Applications**

- Deburring
- Cutting
- Grinding
- Surface finish
- Brushing
- Polishing
- Low power buffing
- Drilling
- Tapping

### **Standard Features and Specifications:**

- Electronic speed control from 0 to 12000 RPM
- Constant torque of 1.3 Nm within the entire speed range
- Closed loop brushless servo motor
- Accommodates brushes, buffs, finishing wheels, cut-off wheels, deburring bits, drill bits, or any other media equipped with either 1/8" or 1/4" shanks
- Air activated collet
- Speed feedback through the servo drive
- Torque feedback through the servo drive
- Separate process parameters for each wheel set through robot program or HMI

## Main Assemblies:



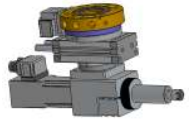
### SP00AC-SR12000-V1

Servo driven auto collet tool assembly without rotary compliance device.



### SP00AC-SR12000-RC

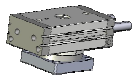
Servo driven auto collet tool complete assembly with rotary compliance device.



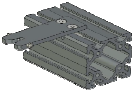
### SP00AC-SR12000-RC-TC

Servo driven auto collet tool complete assembly with rotary compliance device and tool change adapter.

## Options:



**31-10000-MOD** Pneumatically controlled Rotary Compliance device with tool adaptor plate. Allows control of force the media exerts on work piece, by changing the air pressure to each side of the device.



**20090303-1** Media nest that can be mounted directly to standard extrusion and can be used for staging brushes, wheels, deburring drill bits, etc. ( all mounting hardware included)



**20090303-1-001** Arbor holder for media with 1/4" shanks. Tapered end for easy collet entry.



**07030001A ASS'Y** Tool nest assembly allows for precise staging of assemblies at 45 degrees for easy robot access. Includes tool present proximity sensor.

**07030001A ASS'Y 2** Tool nest assembly without sensor used for storage only

**SP00AC-SRxxxx-DRV1** Servo drive, 460 VAC

**CBL064SP-12** Motor Power Cable, 21ft.

**CBL064SF-E1** Feedback Cable, 21ft.

