



All-In-One Manual Grinder

Model: ACT-AIOG-18295

With Optional Torque Controlled Rotary File

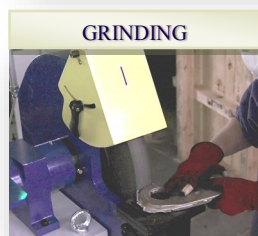
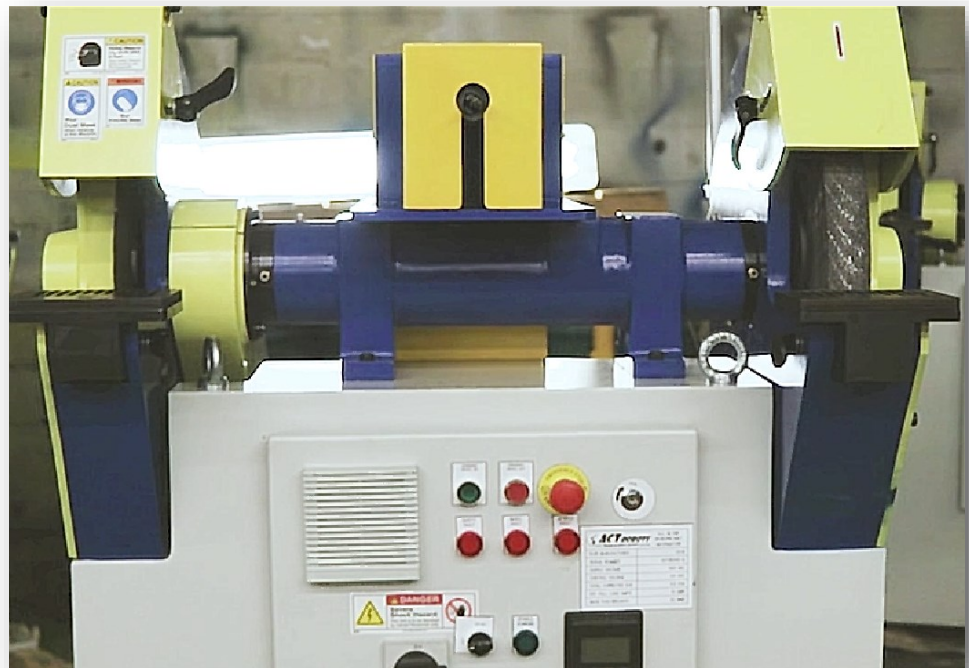
ACT-AIOG-18295 is a heavy duty 2-wheel manual grinder with optional torque controlled rotary file/drill. It meets or exceeds OSHA safety requirements with features such as 1/4" thick spindle guards, adjustable work rest plates, 1/4" thick adjustable spark tongue guard, wheel shaft and nut end caps, emergency stop, VFD with dynamic brake resistor. Wheel speeds can be set for each side and quickly switched with a selector switch. This allows different wheel types to be used such as cutoff and stone.

Specifications:

- 7.5 HP Variable Speed
- Wheel Size Up to 20" x 2" x 10"
- Maximum RPM-3600
- START, STOP, ESTOP buttons
- Fault signal indicators
- Standard voltage 240 VAC, 3ph

Options:

- Rotary file/reamer/drill station
- Torque control for safety
- Foot pedal controlled
- PLC controls and networking
- HMI interface
- Allows remote settings and diagnostics



GRINDING



CUTOFF / EDGER

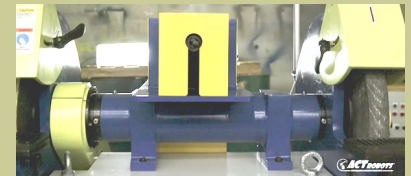


REAMER/ DRILL

ACT ROBOTS INC

Primary Business Address
95 Wooster Court
Bristol, CT 06010
USA

Phone: 860-314-1557
Fax: 860-314-1565
www.actrobots.com
sales@actrobots.com



All-In-One Manual Grinder
Model: ACT-AIOG-18295



ACT-AIOG-000

This is a base model with two wheels (grinding and cutoff/edger) driven by 7.5HP motor with Variable Frequency Drive.

- 7.5 HP dual wheels on single shaft
- Standard voltage 240 VAC, 3ph
- Wheel size up to 20"OD x2"W x 10" bore
- Speed up to 3600 RPM
- Control buttons and indicators
- 2 speed settings via keypad or potentiometers
 - Selected via toggle switch
- Andon stack light indicator tower
- 1/4" thick spindle guards with optional sensors
- Adjustable work rest plates
- 1/4" thick adjustable spark tongue guards
- Wheel shaft and nut lock end caps
- Emergency stop button
- Dynamic brake resistor for fast stopping
- Start and stop buttons
- Fault indicators



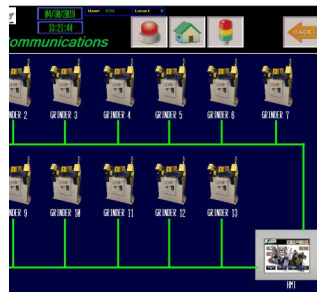
ACT-AIOG-RS

Rotary spindle option driven by torque controlled motor and drive (electronic clutch) This station can be used for reaming, drilling, and other rotary file operations. Controlling torque output of the spindle prevents operator injuries due to workpiece jamming - motor simply stops when too much load is placed on the spindle.

- Up to 1/2 HP spindle output
- Speed setting range 40-2000 RPM
- Max output torque 2.54 Nm (360 oz-in)
- Speed set via drive keypad or remote PC
- Torque adjusted via potentiometer, drive keypad, or remote PC
- Start / Stop activated with foot pedal
- Drill chuck for bits up to 3/4"
- Hinged guard with safety sensor
- Electronic clutch (torque limit) prevents injuries
- Brushless motor—no wearing components
- Dynamic brake resistor for fast stopping
- Optional interlock with wheels to prevent operation when wheels are running

ACT-AIOG-PLC

With this option all controls is done via an Allen Bradley PLC which is connected to wheel and rotary spindle drives via discrete I/O as well as ethernet link. It is programmed to detect drive/motor faults and stop automatically. With this option networking of grinders is possible for remote settings, controls, and diagnostic.



ACT-AIOG-HMI

Optional HMI (Human Machine Interface) software is provided which allows network connection to grinders equipped with PLC option for remote controls and diagnostics of each machine. Status of each grinder is reported on main page and can be viewed in detail. Speed and torque settings can be changed remotely. Laptop with installed software is included

